

Dear Friends:

October 1990

A Musical World is the title of the next exhibit in *The Craft Barn Gallery*, to be held from from October 20th to December 24th. Strings, keyboards, drums, flutes, xylophones, gongs and horns from India, Thailand and Bali will be featured. To celebrate the opening, the **Gamelan Son of Lion** ensemble will perform on Balinese gamelan instruments from **2 to 5 p.m. Saturday, October 20th.**

There will be instruments from Old Delhi, Chiang Mai, Bali, and Java; antique and contemporary drums from Thailand, Ghana, and Biak; as well as drums from the Karren, Akha and Lanna tribes. To round off the exhibition, there will be an assortment of drums produced by Native Americans. The instruments will be for sale and orders can be placed for contemporary instruments in a variety of sizes.

The **Gamelan Son of Lion** ensemble, formed in 1976, is under the artistic direction of Barbara Benary. It has had commissions from the National Endowment for the Arts and the New York State Council on the Arts. It presents an annual concert series in New York City called "American Composers for Gamelan," and accompanies theatre and dance ensembles including the Balinese-American Dance Theatre, the Bali-Java Dance Theatre and the New York Shakespeare Festival.

Batik and sculpture will also be featured in the gallery together with musical instruments for children.

***Erica Zap* has moved to Newport, Rhode Island with her workshop. Her jewelry is sold in fine shops all over the United States and will, of course, be at The Craft Barn. We wish her well in her charming house on Pope Street.**

Now is the time to bring in your *Birkenstock* sandals for repair. We'll send them to California for new soles or cork work or anything else they need. We also have comfortable closed clogs for winter comfort.

We have had a very busy summer with visitors from India, Thailand and Mexico, friends made on buying trips to third world countries.

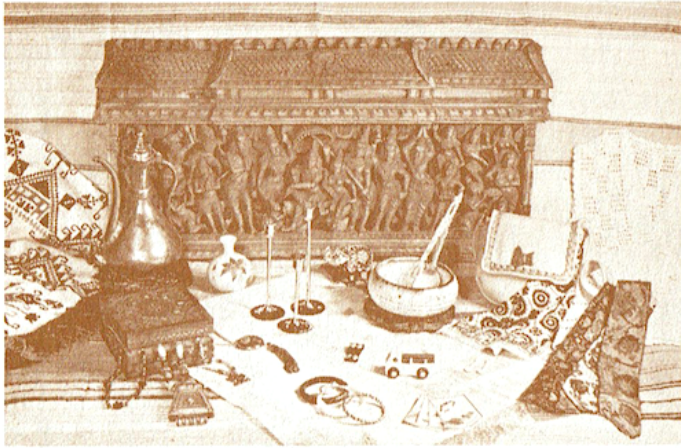
THE Craft Barn has a wide variety of one-of-a kind handcrafts selected abroad for affordable Christmas giving.

handmade jewelry from Asia, Europe, Africa and the Americas in gold, silver & stones
also handprinted bedspreads and tablemats, handmade boxes of all kinds, American ceramics, masks & sculpture, educational non-mechanical toys, Christmas ornaments and, of course

UNICEF Cards

DR. SUSAN LOVE'S BREAST BOOK IS AVAILABLE IN THE BARN AT A CONSIDERABLE DISCOUNT. DR. LOVE, AN INTERNATIONALLY KNOWN EXPERT, ANSWERS QUESTIONS ABOUT BREAST CANCER WHICH HITS SO MANY WOMEN.

***The Craft Barn* is open
Tuesday through Sunday from 10 to 6; after Thanksgiving every
day until Christmas. Weekday evenings from December 19th.**



There are thousands of items in the Barn including: Handcrafted and inlaid wood, from screens to spoons; Clothing - in cotton, silk, wool, and leather Handspun, handprinted bespreads, fabrics, and placemats; Functional and decorative ceramics; Folk toys. There are also countless one-of-a-kind collectables at prices ranging from a few cents to hundreds of dollars.

Many visitors come long distances for our wedding dresses of imported cotton and lace, and for our antique and modern jewelry of gold, silver and precious stones. And there is a large selection of nationally acclaimed jewelry by Erica Zap.

Come and browse and enjoy! The collection changes nearly every week... and if you want to know where something came from or how it was made... just ask... we'd love the chance to talk with you.

...Marge and staff



THE CRAFT BARN

Wheeler Road, Florida, N.Y. 10921
(914) 651-7949



THE CRAFT BARN

A visit to the 200-year-old barn in the Village of Florida will amaze and delight you. Displayed under the hand-hewn chestnut beams is a large and unique collection of handcrafts.

We travel the world to seek items not found anywhere in the United States.

After researching and collecting and selling handcrafts for 30 years, we know how to find museum-quality pieces in the most remote villages. On our yearly buying trips we work directly with the craftspeople to insure excellence in workmanship and design at affordable prices.

Open 10 AM - 6 PM Tuesday - Sunday
Closed Monday
Closed Early January - Mid-March

